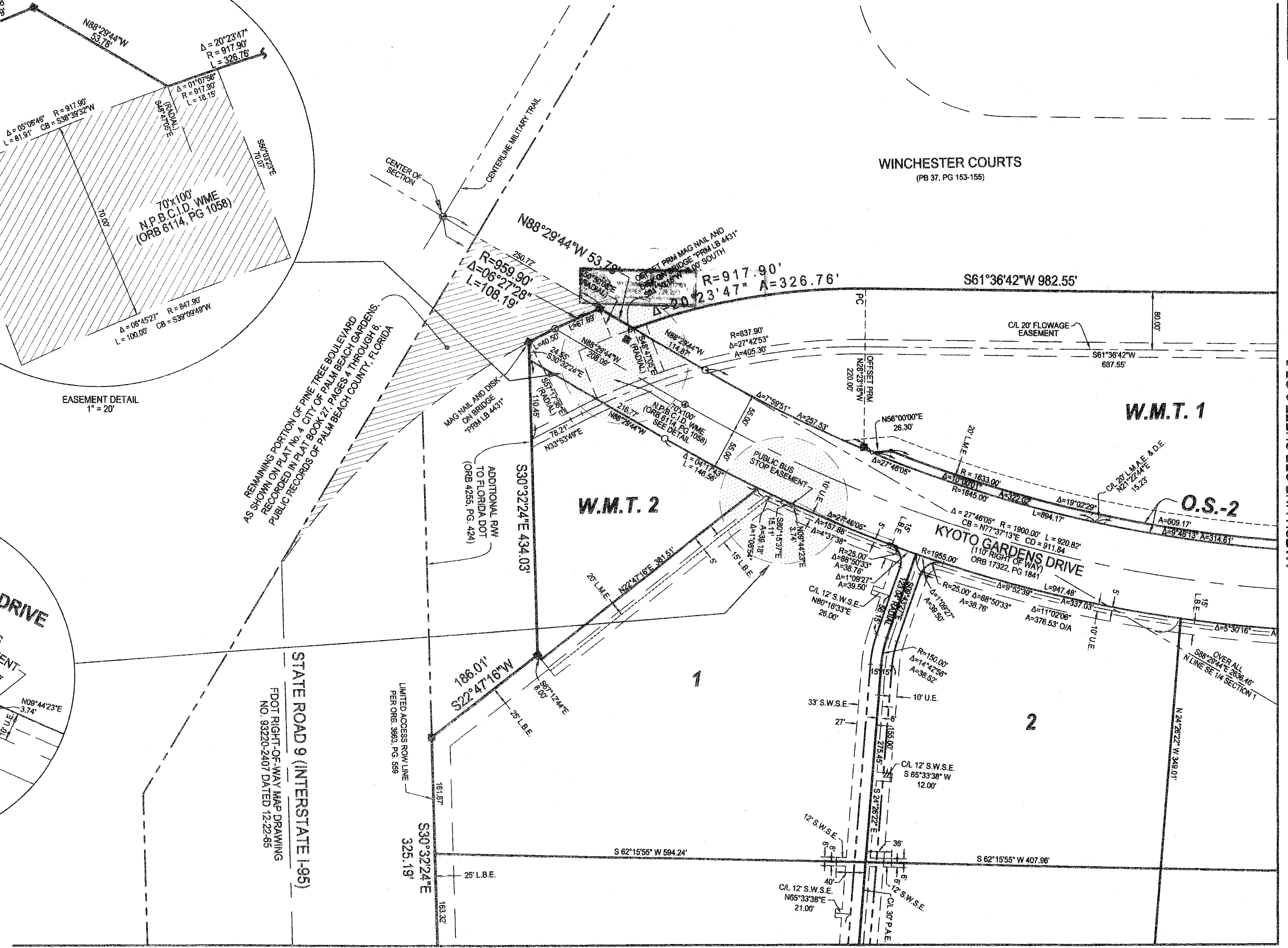
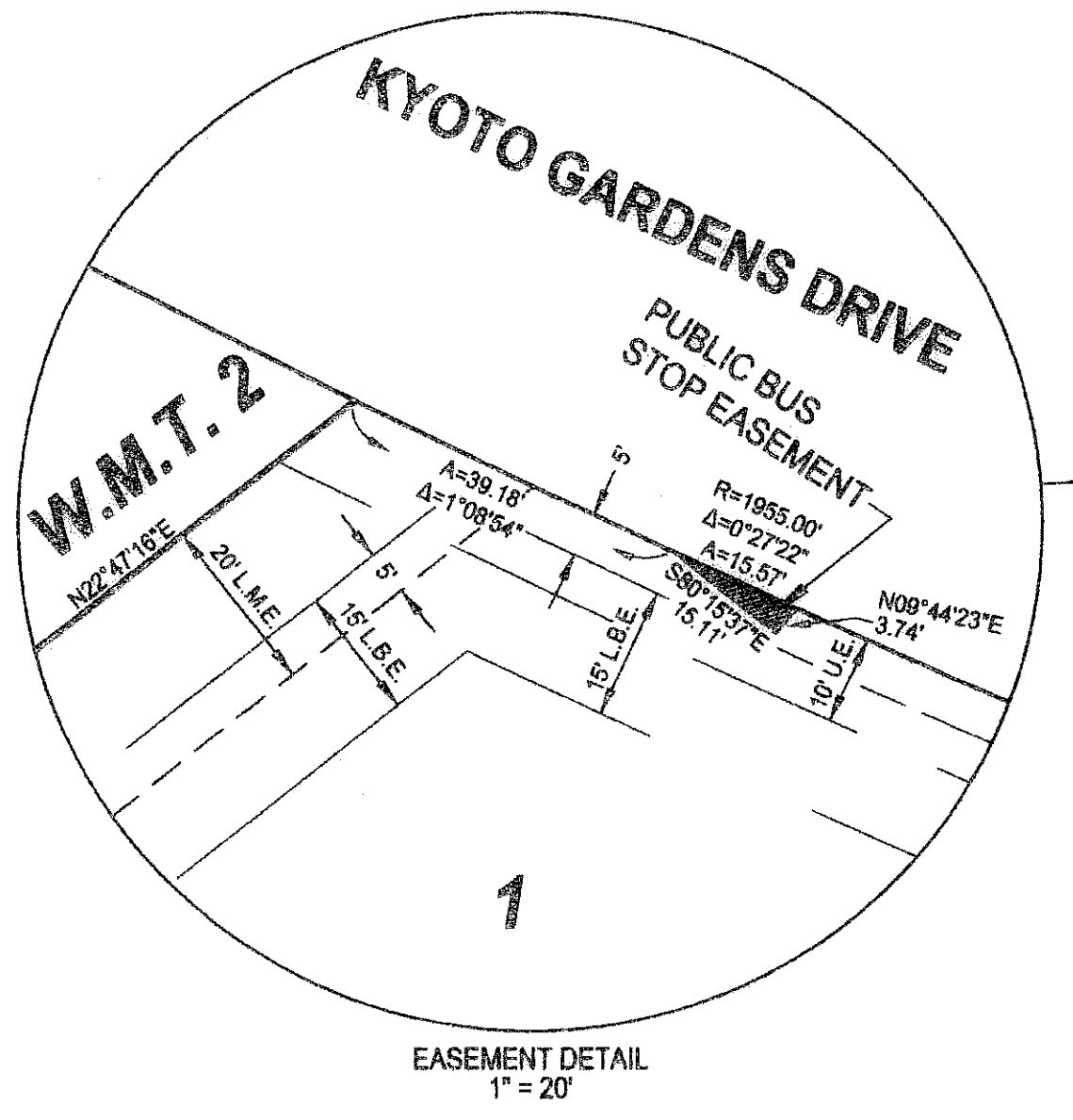
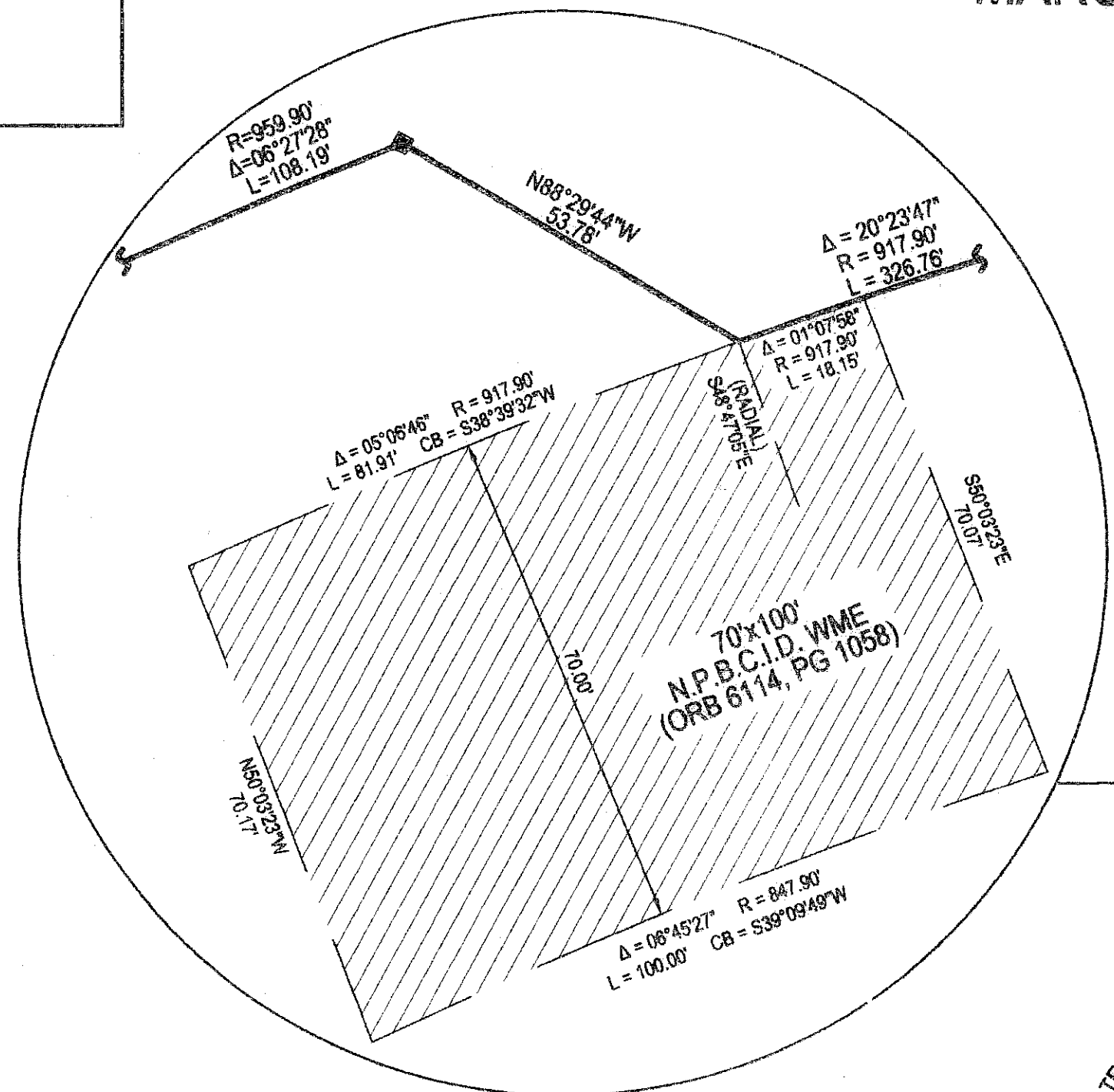
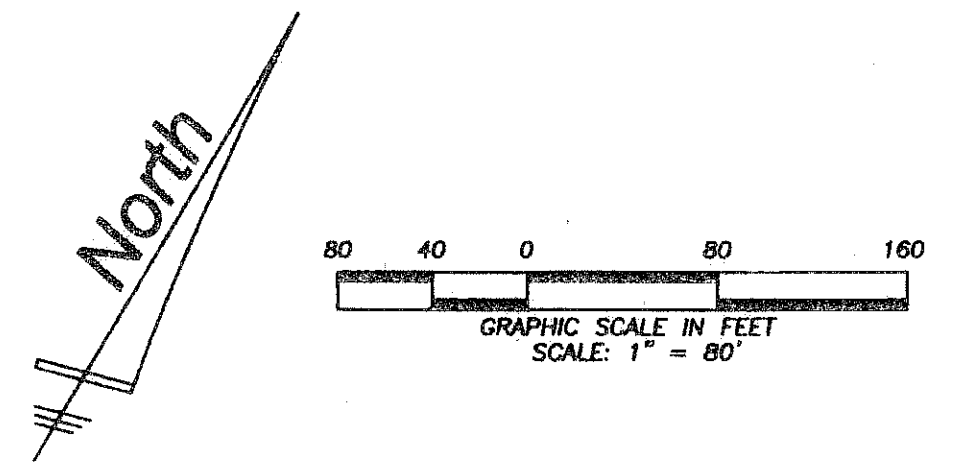


MACARTHUR PARCEL 5A

SITUATE IN SECTION 1, TOWNSHIP 42 SOUTH, RANGE 42 EAST
AND SECTION 6, TOWNSHIP 42 SOUTH, RANGE 43 EAST, CITY
OF PALM BEACH GARDENS, PALM BEACH COUNTY, FLORIDA
MARCH, 2008
SHEET 5 OF 5



MATCH LINE SEE SHEET 2 OF 5

MATCH LINE SEE SHEET 4 OF 5

LIDBERG LAND SURVEYING, INC.
LB 4431
675 West Indianatown Road, Suite 200,
Juniper, Florida 33458 TEL 561-746-8454

CAD K:\AUTOCAD2000\014242\98-157\DWG\157B306-1C.DWG			
REF K:\AUTOCAD\MACARTHUR\157B-105C.DWG			
FLD	A.M.	P.B.	JOB
OFF	S.F.B.	288	98-157-306
CKD	D.C.L.	12, 14-15 17-18	DATE 06/04/02
SHEET 5 OF 5			DWG D98-157P